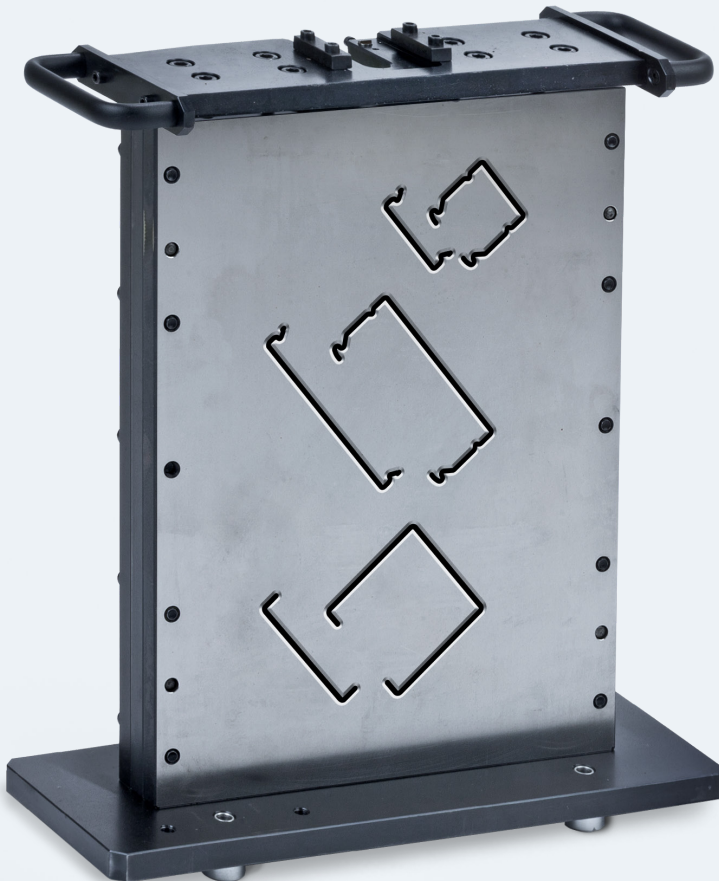


# The PFLITSCH MultiCut

As unique as your requirements



# The PFLITSCH MultiCut in detail



## Your Requirements – and how the MultiCut fulfils them

- » Greater flexibility and versatility because contours can be freely selected and cutting plates can be customised
- » Frameless design enables a large number of cutting contours to be accommodated
- » No reworking necessary because the cut parts have clean and burr-free edges
- » Reduced wastage and efficient use of materials thanks to precision working
- » Time and cost savings thanks to fast and easy working
- » Greater safety thanks to lower risk of injury
- » Rapid return on investment thanks to good price-performance ratio

## Suitable for cutting:

- » PIK-Trunking 15/15 to 200/60, steel and stainless steel
- » Industrial-Trunking 50/50 to 100/100, steel and stainless steel

## Drives

- » Manual drive
- » Manual hydraulic drive
- » Conversion set for hydraulic unit (mains-operated)

## Accessories

- » Customised cutting plate sets for PIK-Trunking and Industrial-Trunking
- » Infeed aid included
- » Length stop (analogue/digital) optionally available

## More info



## PFLITSCH GmbH & Co. KG

Ernst-Pflitsch-Straße 1 · 42499 Hückeswagen · Germany  
T +49 2192 911-0 · info@pflitsch.de · www.pflitsch.de

Werbeflyer MultiCut EN | 08.2023 | 129421 | 129432+